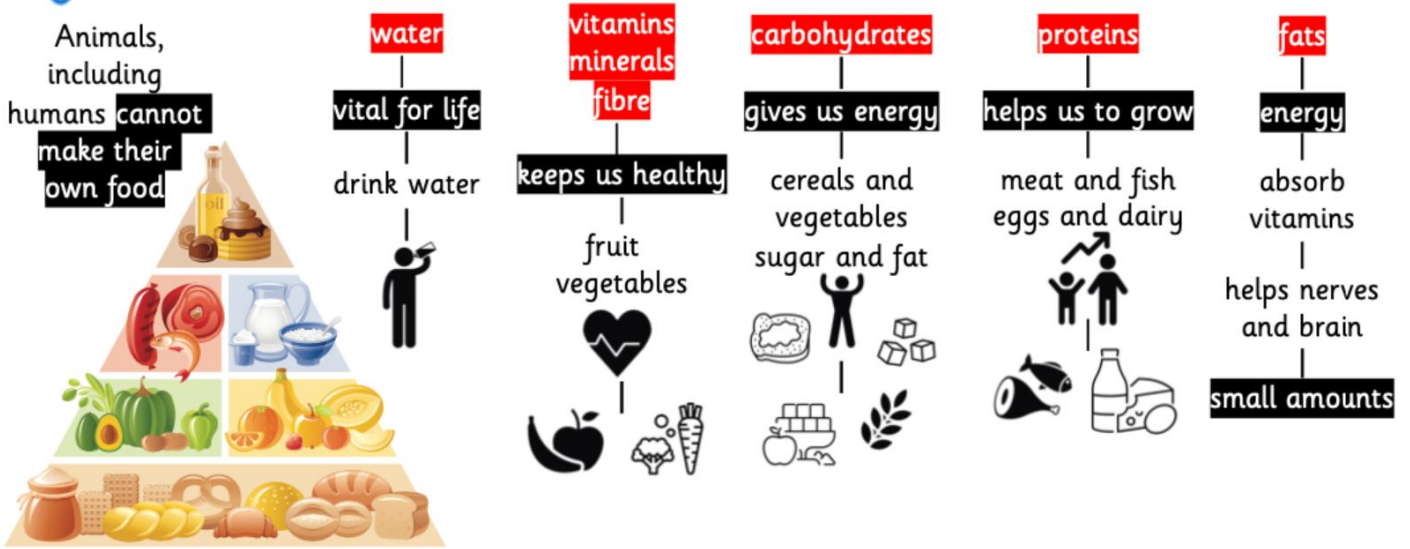
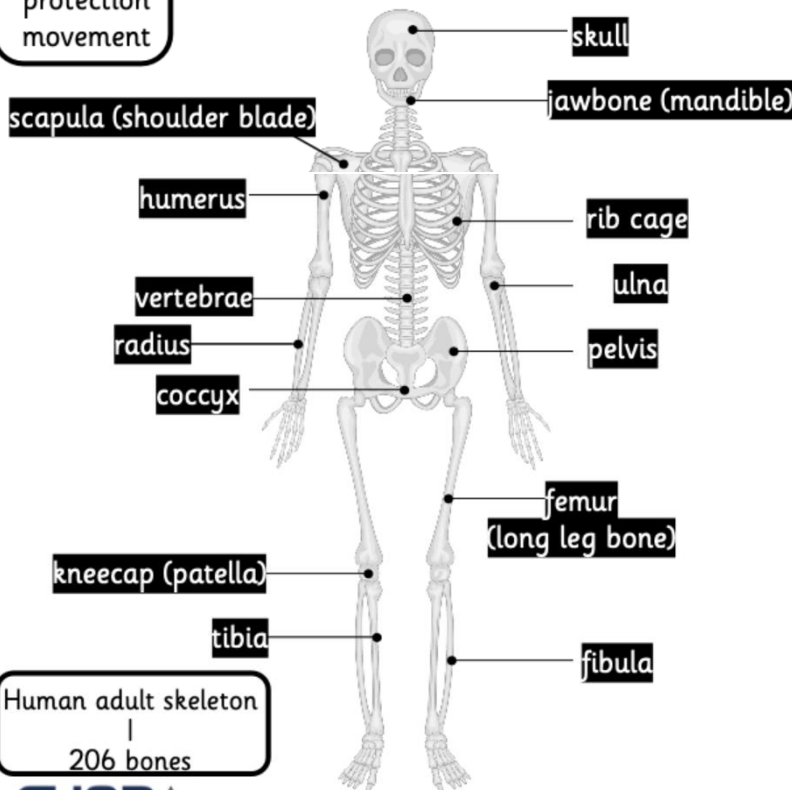
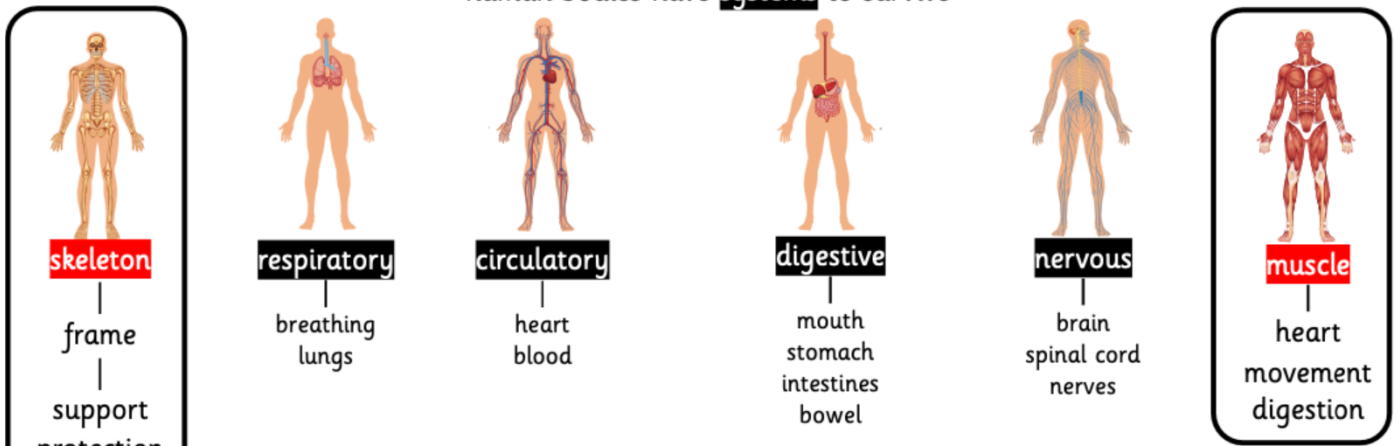




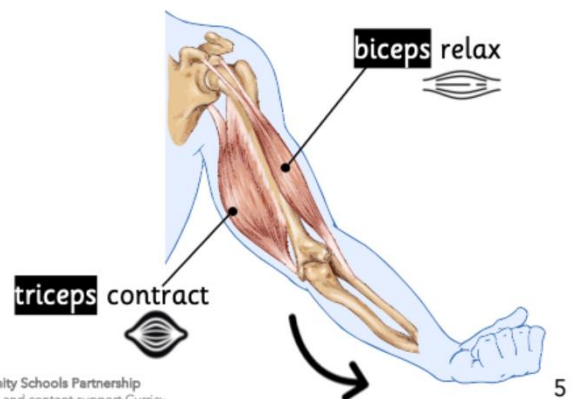
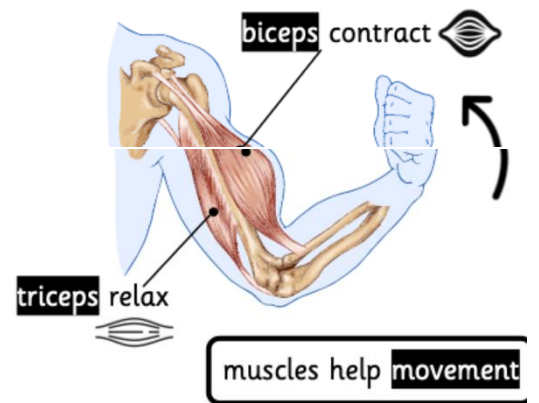
Introduce Animals, including humans



human bodies have **systems** to survive

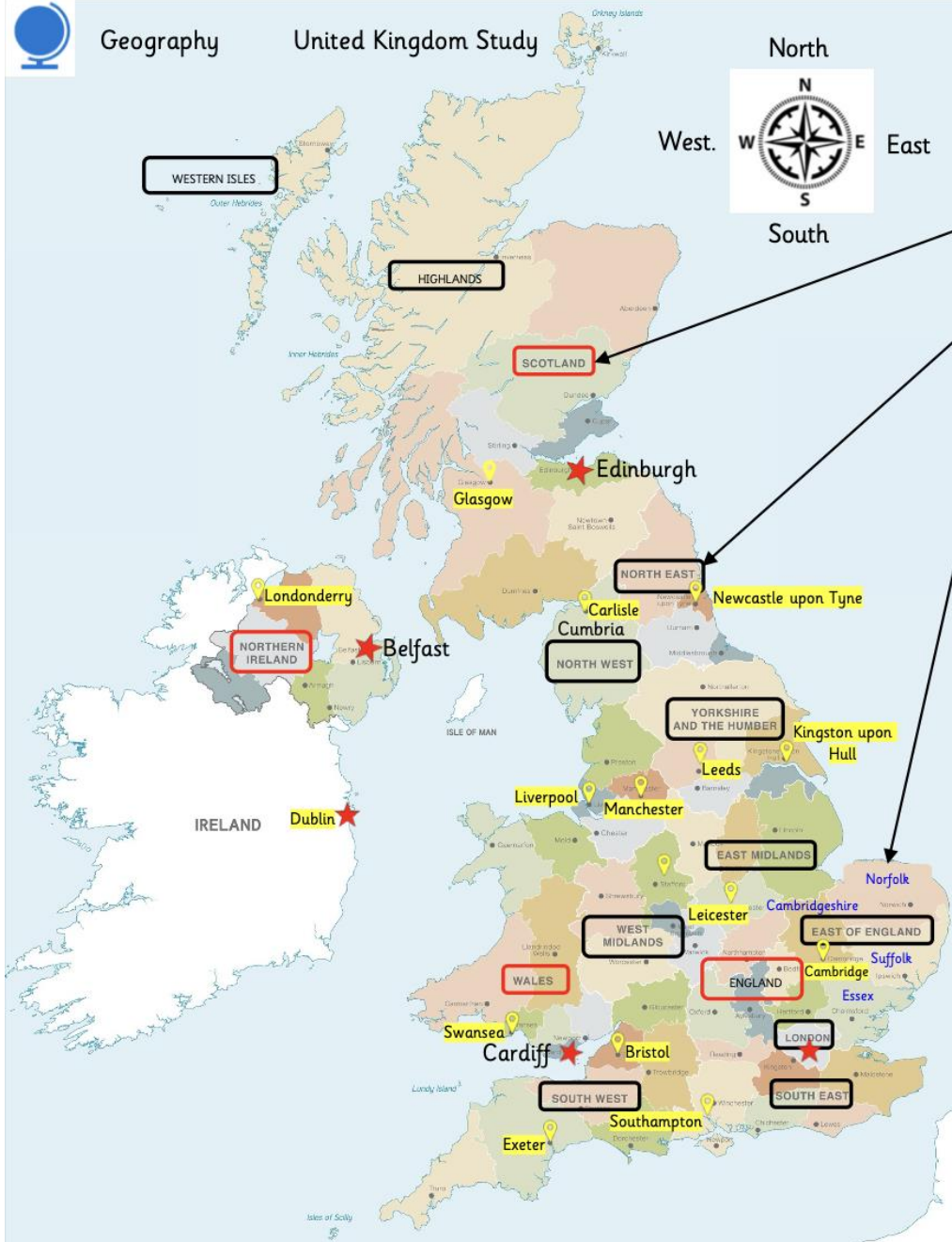


Human adult skeleton
|
206 bones





Map of the United Kingdom



country
England, Scotland, Wales, Northern Ireland

region the name of a large area in the U.K, such as the NORTH EAST

county an area that has a local government - Suffolk or Norfolk

capital city - the city that the government makes decisions from

city larger than a town - has airports, railways, shopping centres and banks. The largest size of place

settlement: where people live - city, town or village

Topography

topo = place + graphy = describe
topography = describe a place

human (built) — features of the land
physical (natural) —

mountain
steeper than a hill and higher than 610m or 2,000ft

Scotland - Highlands
Ben Nevis
Cairngorm

England - Cumbria
Scafell Pike

Wales - Snowdonia
Snowdon

Northern Ireland
Slieve Donard

Lower land

Hills or mountains

Human landmarks

Hadrian's Wall

Angel of the North

Stonehenge

Tower Bridge

White cliffs of Dover

Physical landmarks

